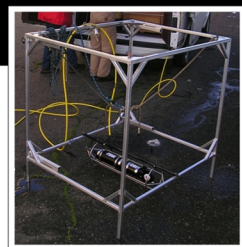
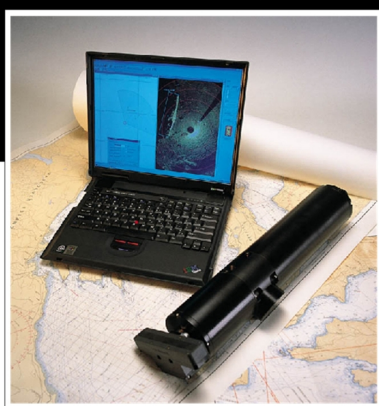
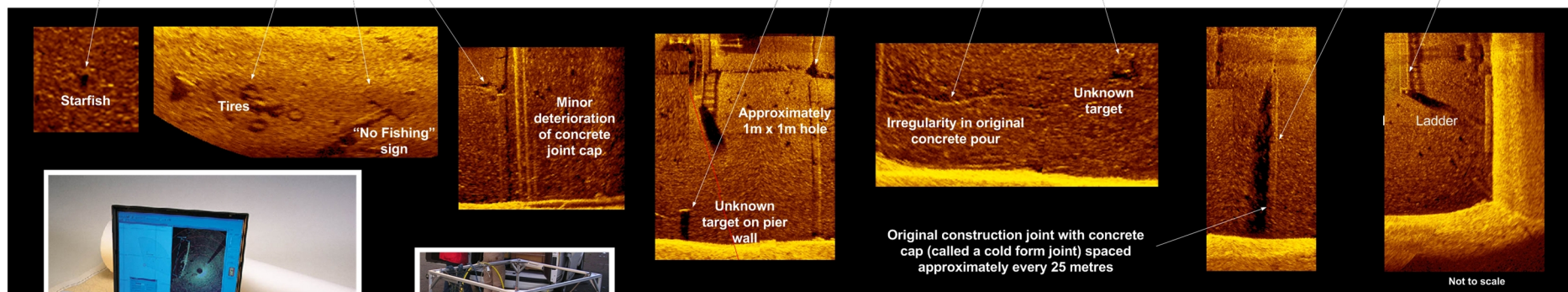
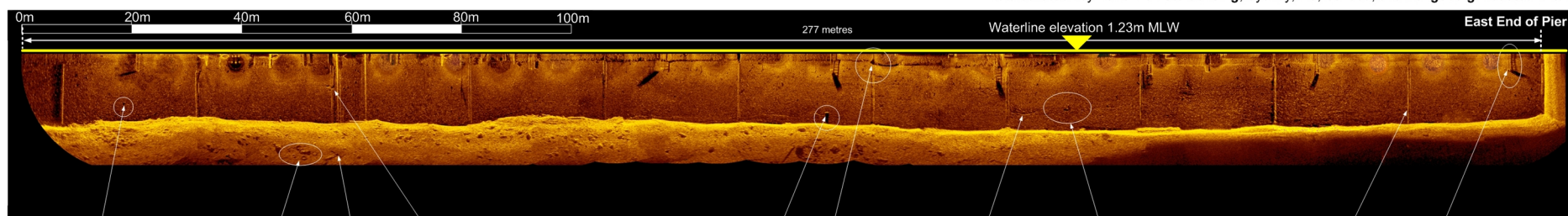


Dock Visualization Survey

Victoria, British Columbia



Data collection by *Terra Remote Sensing*, Sydney, BC, Canada, and *Kongsberg Mesotech Ltd.*



MS 1000 PC-Based Scanning Sonar and High Resolution Sonar Head (left), and deployment frame (above)

The purpose of this survey was to determine the condition of the vertical face of the pier and identify scour or undercutting of the structure.

A light hand-deployed frame was utilized to keep the sonar head at a fixed distance and normal to the vertical face; the unit was lowered from the pier without utilizing a surface support vessel.

Scans were taken at 10 metre spacing; to create the mosaic the sonar origin was removed and replaced by the coverage area of an adjacent scan utilizing *Adobe Photoshop®* and text was added using *Microsoft VISIO®* software.